



***PD5 Commercial Radio
Upgrade Guide***



Copyright Information

Hytera is the trademark or registered trademark of Hytera Communications Co., Ltd. (the Company) in PRC and/or other countries or areas. The Company retains the ownership of its trademarks and product names. All other trademarks and/or product names that may be used in this manual are properties of their respective owners.

The product described in this manual may include the Company's computer programs stored in memory or other media. Laws in PRC and/or other countries or areas protect the exclusive rights of the Company with respect to its computer programs. The purchase of this product shall not be deemed to grant, either directly or by implication, any rights to the purchaser regarding the Company's computer programs. Any of the Company's computer programs may not be copied, modified, distributed, decompiled, or reverse-engineered in any manner without the prior written consent of the Company.

Disclaimer

The Company endeavors to achieve the accuracy and completeness of this manual, but no warranty of accuracy or reliability is given. All the specifications and designs are subject to change without notice due to continuous technology development. No part of this manual may be copied, modified, translated, or distributed in any manner without the express written permission of us.

We do not guarantee, for any particular purpose, the accuracy, validity, timeliness, legitimacy or completeness of the Third Party products and contents involved in this manual.

If you have any suggestions or would like to learn more details, please visit our website at:

<http://www.hytera.com>.

Contents

Documentation Information 1

2. General Information 3

 2.1 Special Instructions before upgrade..... 3

 2.2 Firmware Version Check 3

 2.3 Model Information for Upgrade..... 4

 For Conventional Subscriber 4

3. Installation of Upgrade Program 6

4. Instruction on PD56X/PD50X Upgrade..... 7

 4.1 Requirement 7

 4.2 Operation 8

 4.2.1 Upgrade Procedure 8






 4.2.2 Authentication Procedure 10

Documentation Information

This section describes the conventions and revision history of this document.

Documentation Conventions

Instructional Icons

Icon	Description
 Tip	Indicates information that can help you make better use of your product.
 Note	Indicates references that can further describe the related topics.
 Caution	Indicates situations that could cause data loss or equipment damage.
 Warning	Indicates situations that could cause minor personal injury.
 Danger	Indicates situations that could cause major personal injury or even death.

Notational Conventions

Item	Description
“ ”	The quotation marks enclose the name of a software interface element. For example, click “OK”.
Bold	The text in boldface denotes the name of a hardware button. For example, press the PTT key.
->	The symbol directs you to access a multi-level menu. For example, to select “New” from the “File” menu, we will describe it as follows: File -> New.

Revision History

Version	Date	Description
R5.6	2014-02	Instructing firmware upgrade to R5.6 (A5.06.03.007/S5.06.03.007), Applicable to PD5 series models.
R5.6	2014-04	Instructing firmware upgrade to R5.6 (A5.06.03.008/S5.06.03.008),

Version	Date	Description
		Applicable to PD5 series models.
R5.6	2014-05	Instructing firmware upgrade to R5.6 (A5.06.04.002/S5.06.04.002). Applicable to PD5 series models.
R5.6	2014-08	Instructing firmware upgrade to R5.6 (A5.06.05.000/S5.06.05.000). Applicable to PD5 series models.
R5.6	2015-07	Instructing firmware upgrade to R5.6 (A5.06.05.002/S5.06.05.002). Applicable to PD5 series models.
R5.6	2016-01	Instructing firmware upgrade to R5.6 (A5.06.06.000/C5.06.06.000). Applicable to PD5 series models.
R7.6	2016-06	Instructing firmware upgrade to R7.6 (A7.06.01.006/C7.06.01.006/N7.06.01.006/S7.06.01.006). Applicable to PD5 series models.

2. General Information

2.1 Special Instructions before upgrade

To achieve a successful upgrade of the firmware, please carefully read the instructions below before operation:

- This document can instruct you to upgrade the firmware in subscribers of specific models to A7.06.01.006/C7.06.01.006/N7.06.01.006/S7.06.01.006. As for the model information, please refer to the section “1.3 Model Information for Upgrade” below.
- Make sure the PC is installed with a USB driver. Otherwise, please install the USB driver first, with reference to the *Hytera USB Driver Installation User Guide of V2.01.01.008*.
- After successful upgrade, re-program the subscriber with a CPS of V7.08.04.004.
- Do not run other Hytera applications during upgrade. If the upgrade is interrupted by another application, please try the upgrade again by restarting the subscriber and entering the download mode.
- Do not disconnect the power of the subscriber during upgrade. However, if the power is disconnected or error occurs during upgrade, restart the subscriber for another try.
- If the operation of the USB driver runs out during upgrade, the system may issue “Reading data error!” or “Writing data error!”. In such cases, please try the upgrade again by restarting the subscriber and entering the download mode.

Caution

After firmware upgrade, if the LED flashes upon power-on, please try the upgrade again by restarting the subscriber and entering the download mode.

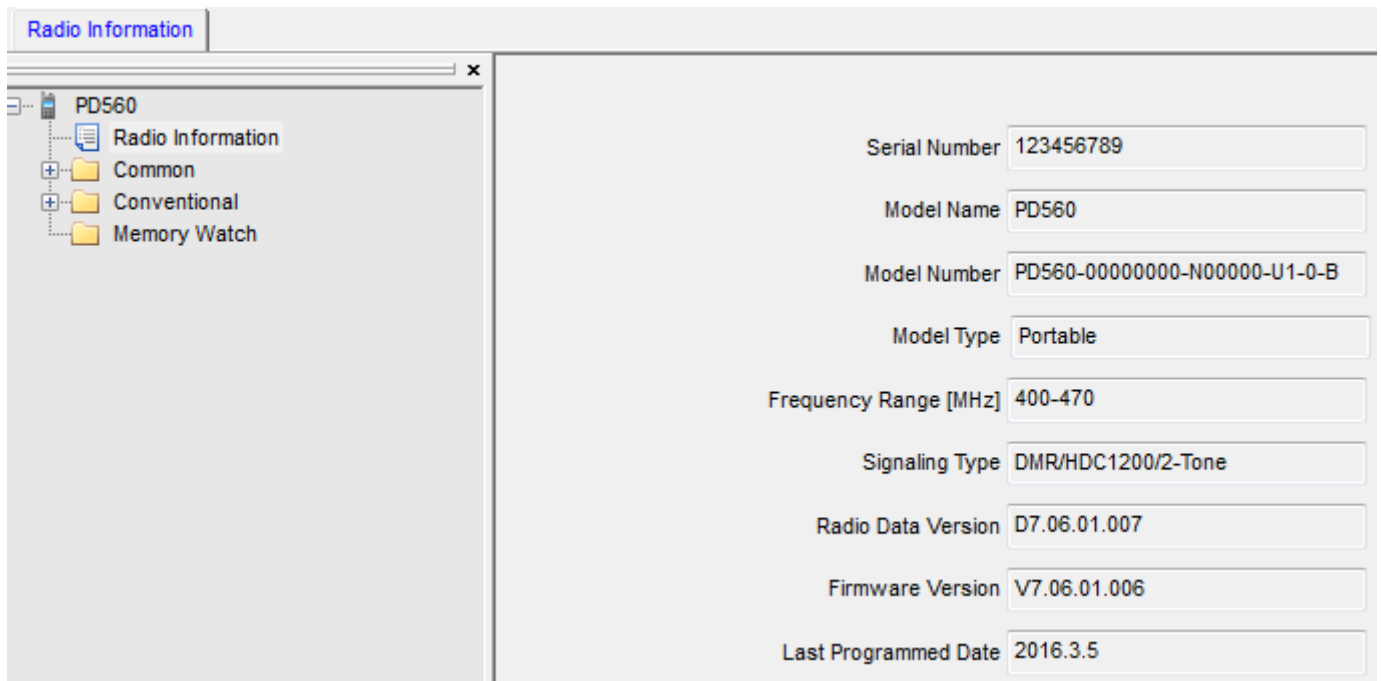
2.2 Firmware Version Check

Caution

Please check whether the firmware is applicable before upgrade. If not applicable, please do not upgrade; otherwise the subscriber may get damaged.

Step 1 Use the match CPS to read data from the target subscriber.

Step 2 Check the “Firmware Version” and “Model Number” under the “Radio Information”, to see whether it satisfies the requirements specified in the section “1.3 Model Information for Upgrade”. Here we take PD56X for example.



Serial Number	123456789
Model Name	PD560
Model Number	PD560-00000000-N00000-U1-0-B
Model Type	Portable
Frequency Range [MHz]	400-470
Signaling Type	DMR/HDC1200/2-Tone
Radio Data Version	D7.06.01.007
Firmware Version	V7.06.01.006
Last Programmed Date	2016.3.5

Step 3 Disconnect the CPS and subscriber.

Step 4 Power off the subscriber.

2.3 Model Information for Upgrade

For Conventional Subscriber

Subscriber	Firmware Version	Model Number
Portable	A5.06.02.009	PD50x-000000z0-N00000-U1-0-A
	S5.06.02.009	
	A5.06.02.010	
	S5.06.02.010	
	A5.06.03.003	PD50x-000000z0-N00000-V1-0-A
	S5.06.03.003	
	A5.06.03.006	
	S5.06.03.006	
	A5.06.03.007	PD505-000000z0-N00000-B1-0-A
	S5.06.03.007	
	A5.06.03.008	

Subscriber	Firmware Version	Model Number
	S5.06.03.008 A5.06.04.002 S5.06.04.002 A5.06.05.000 S5.06.05.000 A5.06.05.002 S5.06.05.002 A5.06.05.003 S5.06.05.003	PD56x-000000z0-N00000-U1-0-A
Portable	A7.06.01.006 C7.06.01.006 N7.06.01.006 S7.06.01.006	PD500-000000P0-N00000-U1-0-A PD500-000000P0-N00000-U1-0-B PD500-000000P0-N00000-U8-0-A PD500-000000P0-N00000-V1-0-A PD500-000000P0-N00000-V1-0-B PD560-000000P0-N00000-U1-0-A PD560-000000P0-N00000-U1-0-B PD560-000000P0-N00000-U3-0-A PD560-000000P0-N00000-U8-0-A PD560-000000P0-N00000-V1-0-B

3. Installation of Upgrade Program

Before the firmware upgrade, install the corresponding program in the following steps.

Step 1 Prepare the firmware upgrade package.

Prepare the upgrade package for the subscriber to be upgraded, according to your exact needs.

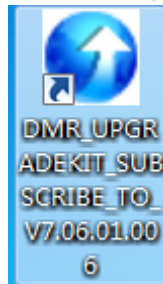
Step 2 Decompress the upgrade package.

You can find the corresponding firmware upgrade guide and setup program.

Step 3 Double click the program (setup.exe) to start the installation.

Step 4 Refer to the interface prompts to finish the installation.

Then you can find a desktop shortcut for this upgrade software.



4. Instruction on PD56X/PD50X Upgrade

4.1 Requirement

- The function keys of the subscriber must have been assigned with dedicated functions before upgrade.



- The appropriate programming cable of PD5 must be available.



4.2 Operation

4.2.1 Upgrade Procedure

Step 1 Power off the subscriber.

Step 2 Connect the subscriber to PC.

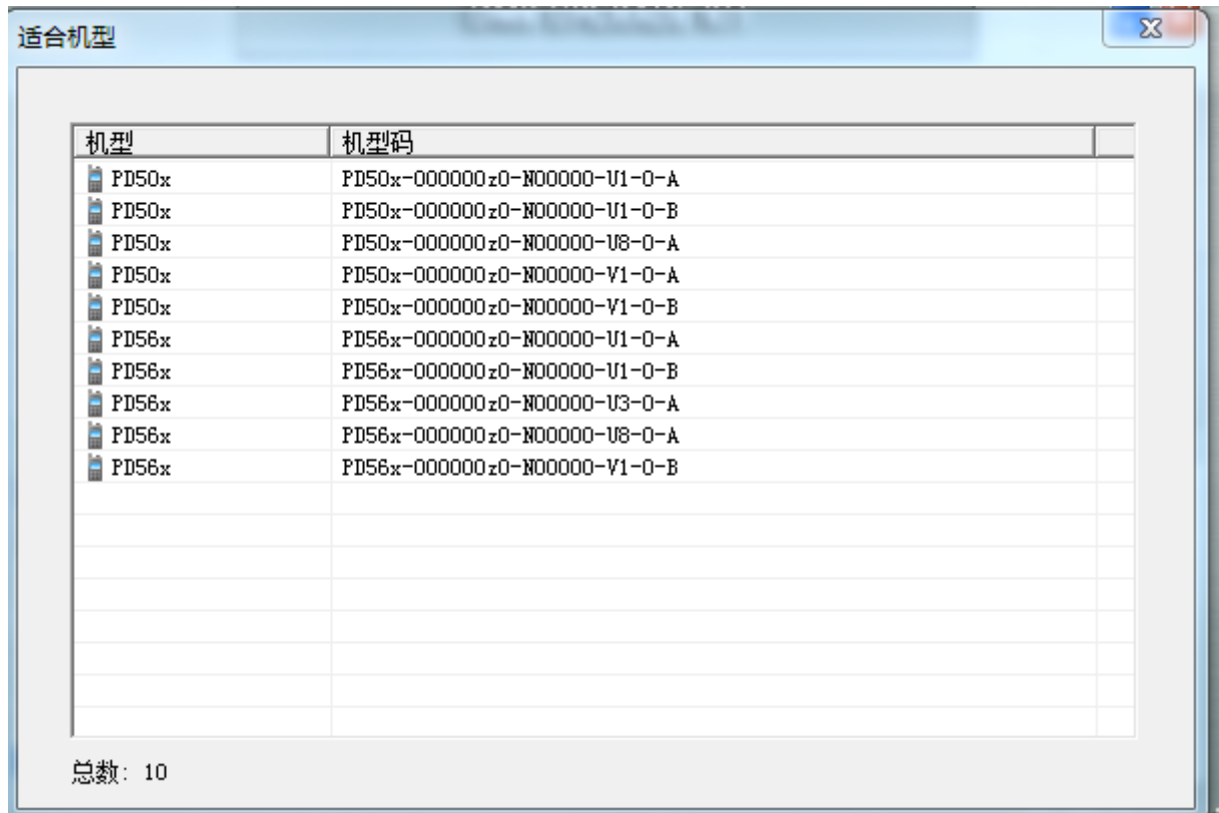
Step 3 Hold **SK1** while powering it on, so as to enter the download mode.

Step 4 Run the software using the corresponding shortcut.

If a “Restore” button is displayed in the main interface, it indicates abnormality of the RCDB data during previous upgrade. In this case, please repair the subscriber, with reference to Step 6 below.



Go to “Menu -> For Radio” and check the model and firmware version, as shown below.



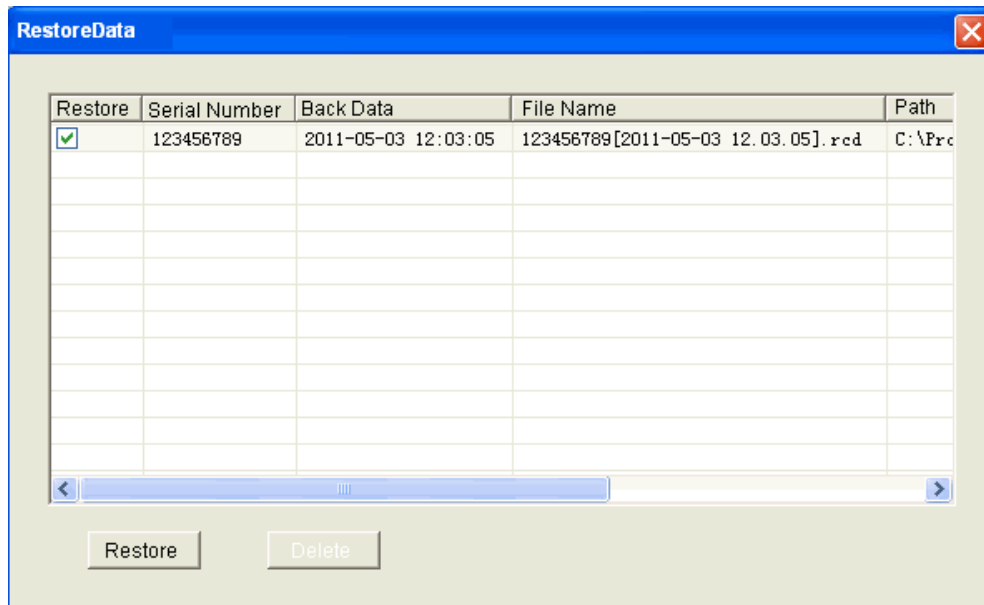
Step 5 Click “Upgrade” in the main interface to begin.

During the upgrade process,

- In case of “Open USB failed”, check whether the cable is properly connected to the subscriber, and whether the USB interface is busy with other software.
- In case of “The firmware version [xx.x.xx.xxx] is beyond the upgrade software!”, it indicates the upgrade package is not compatible with the current firmware or model. Please stop upgrading right away.
- In case of “Reading data error!” or “Writing data error!” or alerts alike, it indicates the USB connection has run out. Click “OK”, and try the upgrade again by restarting the subscriber and entering the download mode.
- In case of “Writing data error! RCDB data is already saved to file, from which you can restore your data when necessary.”, it indicates an abnormality of the RCDB data during upgrade. Click “OK” and then you can see a “Restore” button in the main interface.

Step 6 (optional) Repair the subscriber in case of the RCDB data abnormality, in this way:

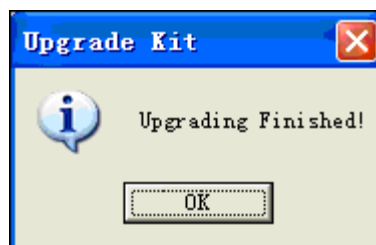
1. Click “Restore” to proceed to the corresponding interface.



2. Select the serial number of the subscriber to be repaired, and click “Restore” again.
If the serial number is not available, do not use the button “Restore”.
3. Refer to Step 4~Step 5 for more operation.

Step 7 A prompt box as shown below appears upon successful upgrade.

If no prompt appears, please try the upgrade again by restarting the subscriber and entering the download mode.



Step 8 Click “OK” and power off the subscriber.

4.2.2 Authentication Procedure

After the above operation, the firmware version will be upgraded to A7.06.01.006/C7.06.01.006/N7.06.01.006/S7.06.01.006. Please perform authentication in this way:

- Step 1** Power on the subscriber.
- Step 2** Press the **Menu** key to enter the main menu.
- Step 3** Press the **Down** key to select “Settings”.
- Step 4** Press the **OK** key to enter the “Settings” interface.
- Step 5** Press the **Down** key to select “Device Info”.

Step 6 Press the **OK** key to enter the “Device Info” interface, to view the details of the subscriber.

Step 7 Check whether the firmware version is A7.06.01.006/C7.06.01.006/N7.06.01.006/S7.06.01.006

Step 8 Power off the subscriber.



is the trademark or registered trademark of Hytera Communications Corporation Limited.
© 2016 Hytera Communications Corporation Limited. All Rights Reserved.

Address: HYT Tower, Hi-Tech Industrial Park North, Beihuan
RD., Nanshan District, Shenzhen, China

Postcode: 518057
<http://www.hytera.com>