

Introduction

This is an application for updating the firmware for digital repeaters manufactured by Yaesu Musen Co., Ltd.

The applicable repeater and the updated firmware version are as follows.

- * Repeater: **DR-1X / XE**
- * Version: **1.00Z**
- * Destination: **USA,EXP,EU,CHN,AUS**

(CAUTION)

Please be sure to confirm the model and the destination (Type) of your transceiver before writing firmware to it.

Writing incorrect firmware to the transceiver may cause abnormal operation or failure.

Company names and product names mentioned in this Help guide are trademarks or registered trademarks of respective companies.

[System Requirements\(Operating Environment\)](#)

[Installation / De-installation Procedure](#)

[Method of Use](#)

[Revision History](#)

System Requirements

To use this program, the following computer environments and a connecting cable are required.

1. Operating system

One of the following operating system environments is required.

- * Microsoft Windows Vista (Service Pack 2 or later)
- * Microsoft Windows 7 (Service Pack 1 or later)
- * Microsoft Windows 8
- * Microsoft Windows 8.1

2. CPU

CPU performance must be high enough to meet the operating system requirement.

3. RAM (system memory)

Must have enough space in RAM to meet the operating system requirement.

4. HDD (hard disk drive)

Must have enough space on your HDD to meet the operating system requirement.

In addition to the required space to run the operating system, another 5 MB or more free space is required to run the program.

5. Required computer peripheral interface

USB interface (USB port)

Monitor and video card with the SVGA (800x600) or higher screen resolution

A keyboard and a pointing device such as a mouse

6. Other required equipment

Data cable (SCU-20) for connecting DR-1X to your PC

(Note)

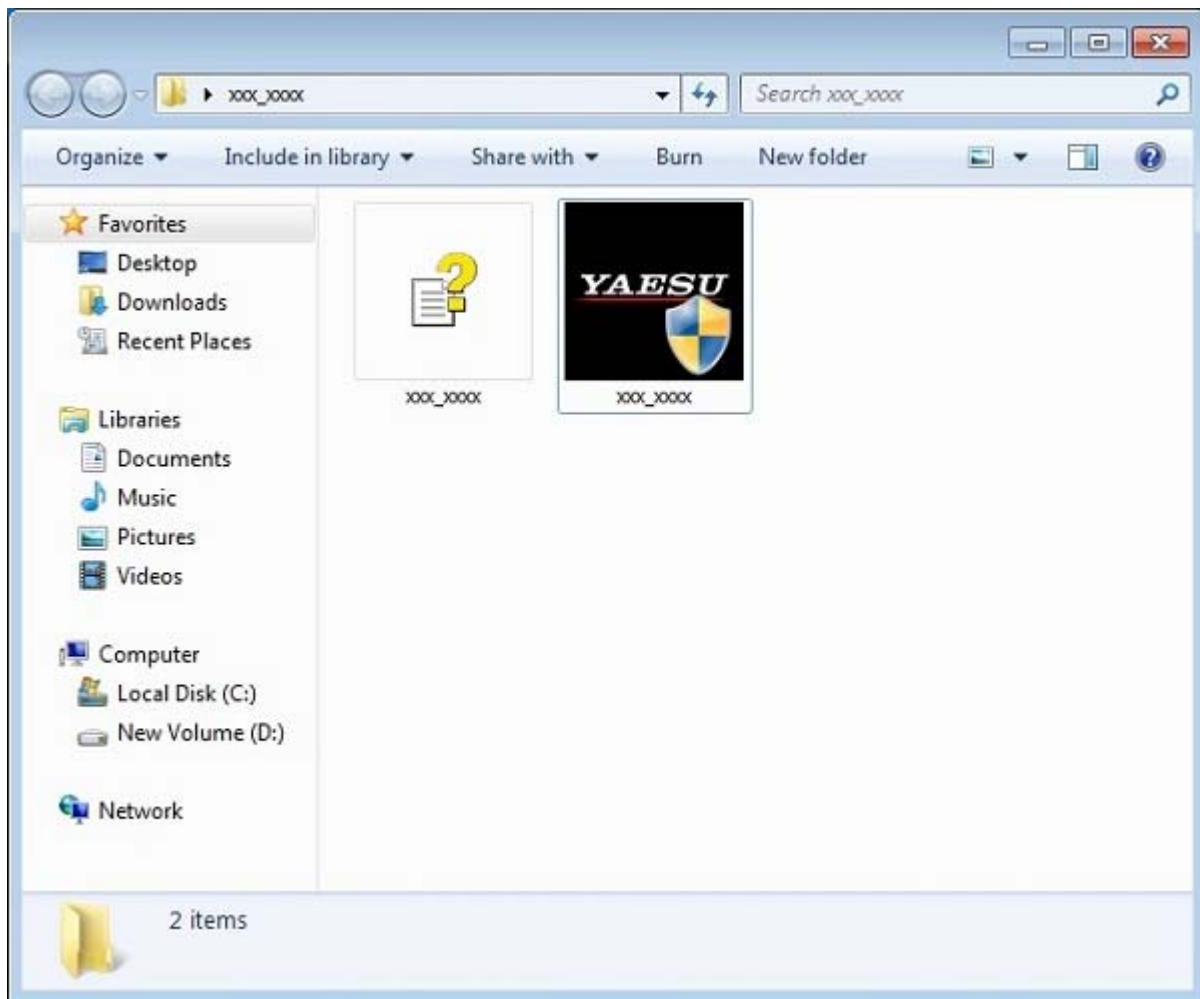
When using SCU-20, install the driver software in advance, and then update the firmware.

[Click here to install the driver software for SCU-20 and learn how to install it. \(Go to the website.\)](#)

Installation / De-installation Procedure

1. Installation procedure

- (a) Decompress the downloaded update program.
- (b) When decompressed, the folder at the opened location will automatically open. Execute the update program (Yaesu icon) in the folder.



* Please go to [this page](#) to see how to use the update program.

2. De-installation procedure

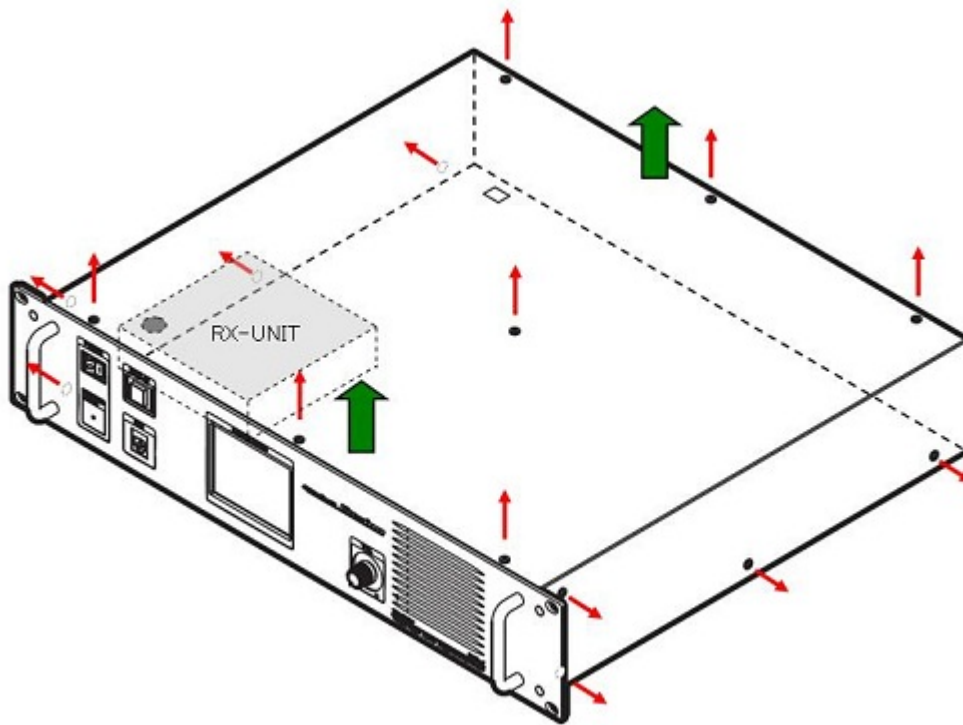
Please delete the folder opened by the update program.

*The operation will end if the opened folder is deleted since no data will be written to the registry and system folder.

Method of Use

Press the Update button to display the preparation procedure screen which explains what to do before updating. Follow the procedure below.

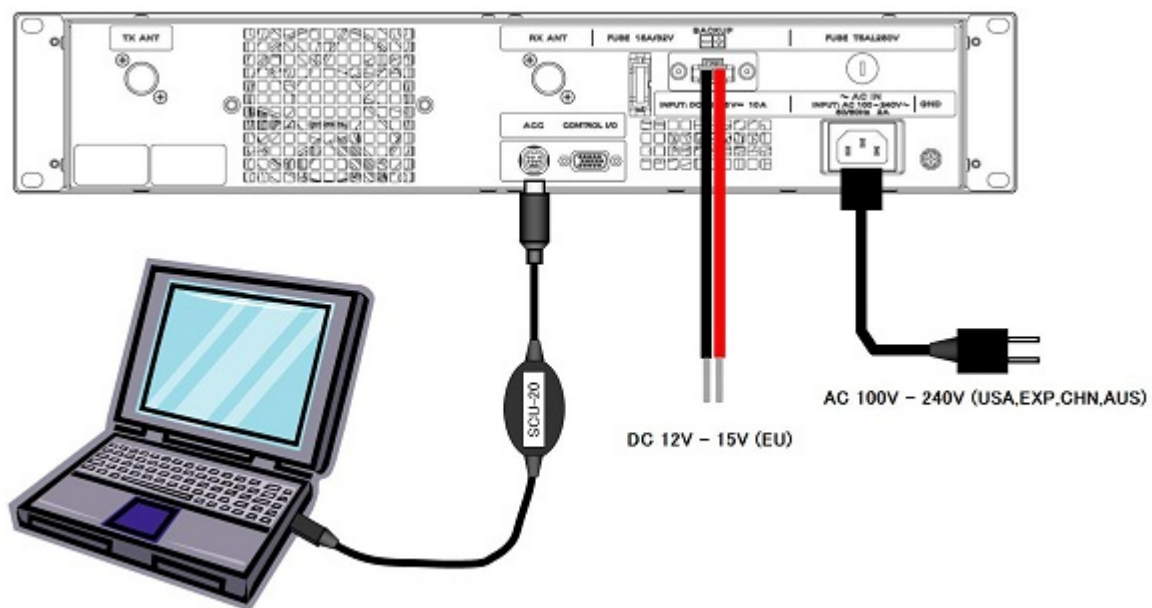
Step 1 Remove the 15 screws from the upper lid and then remove the lid.



Step 2 From the hole on the bottom left of the RX-UNIT case, set the firmware writing switch inside to the BOOT position (upwards).



Step 3 Connect the data cable (SCU-20) and the AC or DC power cord to DR-1X.



Step 4 Update the software.

1. Move the file update to a desired area to decompress and save. (DR-1X_vRxxxx.exe)

xxxx differs depending on the firmware version.

2. Use the power switch to turn on the power of DR-1X. The cooling fan will start rotating but nothing will appear on the screen.
3. Double-click (DR-1X_vRxxxx.exe) saved on your PC to run the program.
4. Follow the on-screen instructions on your PC to update the firmware. (Set the COM port number.)*1
5. After completing the update, turn off the power of DR-1X, and then from the hole on the bottom left of the RX-UNIT case, set the firmware writing switch inside to the original position (downwards).
6. Attach the upper lid and fasten using 15 screws.
7. Turn on the power of DR-1X, and then press the SETUP button to check the version number displayed at the top of the screen. If you successfully update the firmware, the updated version number will be displayed.

*1 You will be asked the COM port number while updating the firmware, enter the COM port number assigned when you installed SCU-20.

Revision History

The revision history is as follows.

* **Version 1.00Z** (January , 2015)

The functions have been improved and the firmware has been optimized.

* **Version 1.00W** (December , 2014)

The functions have been improved and the firmware has been optimized.

* **Version 1.00T** (December , 2014)

The functions have been improved and the firmware has been optimized.

* **Version 1.00R** (August , 2014)

The functions have been improved and the firmware has been optimized.
